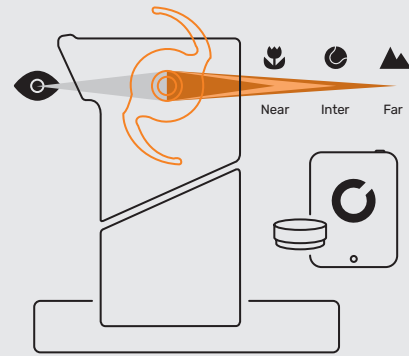


# RALV®

Experience IOL vision prior to implantation.



RALV visualizes postop vision with intraocular lenses to assist in the selection of an IOL for refractive lens exchange by providing a subjective assessment.

**Before surgery**, RALV provides an answer to the question of  
**“What will my vision with the implanted IOL be after lens exchange?”**

RALV® is:

- ✓ a revolutionary modified patient selection option prior to refractive lens exchange.
- ✓ the trial vision test for the selected IOL.
- ✓ the missing link between preop predicted and postop achieved vision.

## RALV® stands for **R**ea**A**r**t**ificial **L**ens **V**ision

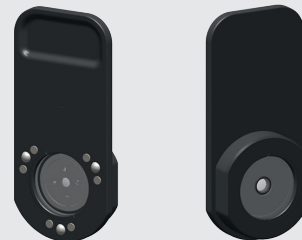
### The hardware

Smart, functional design. Realistic visual impression looking at objects/pictures in the room. Intuitive operation.



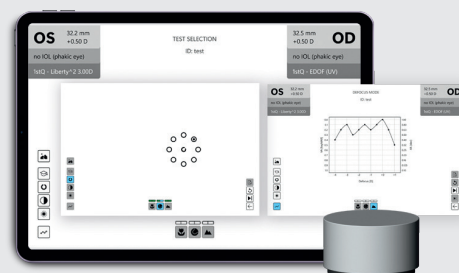
### The IOL shuttles

Compatible with all commonly used IOL models, optics and dual-lens systems. Quality assurance through NFC coding. ZERO shuttle for neutralizing the natural lens. Corrective lenses for cylinders.



### The RALV® app

Interactive visual acuity, contrast and halo/glare test. Self-measurement by the patient. Digital data acquisition and documentation.



# 1stQ integrates RALV<sup>®</sup> as a standardized process into your pc-IOL workflow. (Available in Germany only)

✓ Reliable results

✓ Resource-optimized

✓ Reproducible

## Your new patient journey for refractive lens exchange

### 1 Patient selection

#### 1stQ visual acuity quick test:

Digital RLE suitability test. For the safe selection of suitable RLE candidates. Determines at the very beginning of the patient journey whether a patient is suitable for refractive lens exchange.



Visual acuity quick test

### 2 Patient information

#### 1stQ virtual vision experience:

Digital patient information including AR vision simulation with monofocal, EDOF, and multifocal artificial lens. Educates the patient of what the problem is, why they have it, and what they can do about it.

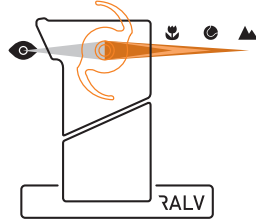


Virtual Vision Experience

### 3 Trial vision test & decision on IOL

#### RALV trial vision test:

Preoperative trial vision test through the actual IOL. Gives the patient reassurance about what the vision will be through their preferred IOL. The subjective overall visual impression with the real IOL can be experienced and compared, and enables a self-determined IOL selection.

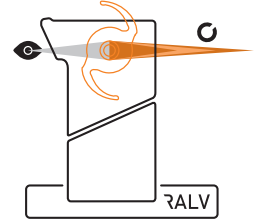


Overall visual impression

### 4 Preoperative measurement

#### RALV quantitative measurement:

Quantitative measurement of visual acuity, contrast and halo/glare using the real artificial lens. What is my vision with the preferred artificial lens?

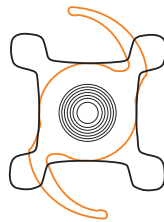


Visual acuity, contrast, halo/glare test

### 5 IOL implantation

#### Liberty<sup>2</sup> dual-lens system (optional):

Securing the predicted surgical outcome from the IOL side. The reversible and at any time optically adjustable trifocal Liberty<sup>2</sup> dual-lens system.

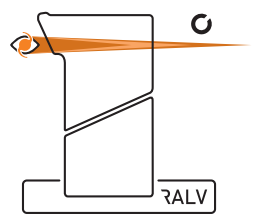


Liberty<sup>2</sup> - the dual-lens system

### 6 Postoperative measurement

#### RALV quantitative measurement:

Quantitative measurement of visual acuity, contrast and halo/glare with the implanted artificial lens. Do the preoperatively predicted and the postoperatively achieved vision match?



Visual acuity, contrast, halo/glare test



For more information visit:  
[www.1stq.de/ralv](http://www.1stq.de/ralv)

RALV is a product of DEZIMAL GmbH.  
All rights reserved by DEZIMAL.

[www.dezimal.me](http://www.dezimal.me)



1stQ Deutschland GmbH • Konrad-Zuse-Ring 23 • 68163 Mannheim

[www.1stq.de](http://www.1stq.de)