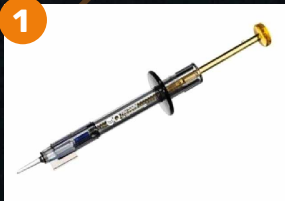


AddOn[®]

Handling Instruction



1

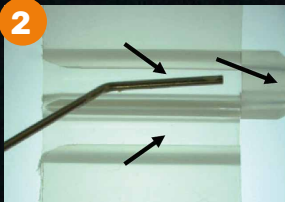
Use the 1stInject 2.0 HB injector for implantation. In the event of a toric AddOn with a cylinder > 6.0 D, use the 1stInject 2.4 HB injector instead.



6

Visual control while cartridge is closed

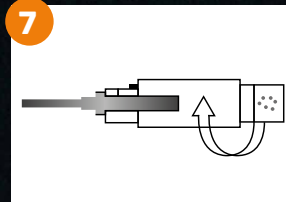
Verify by visual control that the lens is symmetrically folded within the loading chamber and not trapped. Insert the cartridge into the injector.



2

Open the wings of the cartridge to the full extent of 180°. Apply a dispersive viscoelastic fluid into the nozzle and onto both grooves of the loading chamber (see arrows).

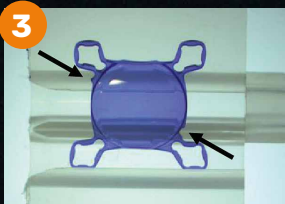
Preparing the Cartridge



7

Locking the Cartridge

Lock the cartridge in the injector by turning it left. For further information please refer to the handling instructions of the injector system.



3

Place the AddOn into the cartridge: the markings at the optic edges should be positioned at 4 o'clock to the right of the haptic and at 10 o'clock to the left of the haptic (see arrows).

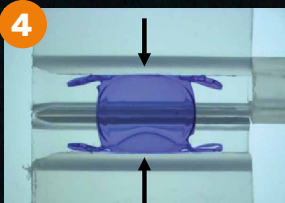
Positioning the AddOn*



8

Controlled and steady feed forward

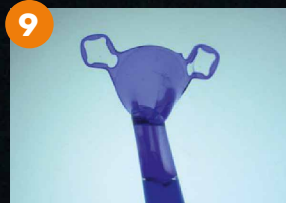
Inject the lens into the eye in a slow and controlled manner. The entire feed forward should not be interrupted until the injection is completed! Never pull the plunger back!



4

Position the lens centrally in the loading chamber in a "reversed U" configuration: . Make sure that the edges of the haptics are securely located under the guiding rims (see arrows) and that they are not twisted.

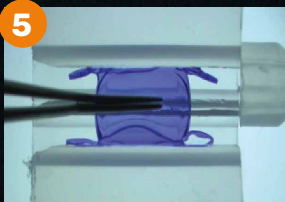
Placement in „reversed U“ position



9

Consistent unfolding of the leading haptics

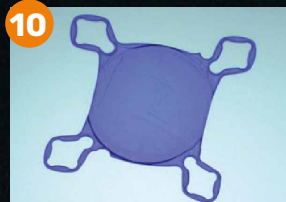
You may possibly feel a slight initial resistance. Any major resistance might be an indication of a trapped lens. Do not apply any excessive pressure on the plunger.



5

Hold the lens in position using a forceps, so the edge of the optic stays securely positioned under the rim of the flaps. Ensure the haptics and the optic have fully entered the loading chamber. While keeping the lens in position with the forceps compressed, carefully close the flaps of the cartridge.

Closing the Cartridge



10

Fully unfolded AddOn

Stop pushing the plunger forward once the lens has completely left the cartridge and the AddOn has fully unfolded in the eye.

*AddOn stained blue for visualization